

- LUXURY YACHT D'ANGLETERRE II -

135 feet / 41.2 meters | W.A. Souter & Sons | 1986



10 GUESTS



5 STATEROOMS



8 CREW



22.59 KNOTS

ABOUT D'ANGLETERRE II

The D'ANGLETERRE II yacht brochure reveals a vessel of distinction, where careful thought was placed into every detail on board. With an LOA of 135ft / 41.2m, the interior design is by Don Shead Yacht Design, with exterior styling by Don Shead Yacht Design. The D'ANGLETERRE II yacht accommodates 10 guests in 5 staterooms, which are each appointed with the best in comfort and entertainment. Explore this top of the line yacht, built by luxury yacht builder W.A. Souter & Sons, where meticulous work and creativity come together to create a floating sanctuary. Located in: the South of France, D'ANGLETERRE II beckons all who seek the best in luxury travel.

ASKING PRICE

For Info Please Inquire

CHARTER RATE

For Info Please Inquire

SPECIFICATIONS

Builder	W.A. Souter & Sons
Built / Refits	1986
Length	135 ft / 41.2 m
Beam	23 ft / 7 m
Draft	7 ft / 2.1 m
Gross Tonnage	277
Naval Architect	-
Exterior Stylist	Don Shead Yacht Design
Interior Stylist	Don Shead Yacht Design
Hull	Aluminum
Classification	-
Flag	Malta

- LUXURY YACHT D'ANGLETERRE II -

135 feet / 41.2 meters | W.A. Souter & Sons | 1986



- LUXURY YACHT D'ANGLETERRE II -

135 feet / 41.2 meters | W.A. Souter & Sons | 1986



- LUXURY YACHT D'ANGLETERRE II -

135 feet / 41.2 meters | W.A. Souter & Sons | 1986



- LUXURY YACHT D'ANGLETERRE II -

135 feet / 41.2 meters | W.A. Souter & Sons | 1986



- LUXURY YACHT D'ANGLETERRE II -

135 feet / 41.2 meters | W.A. Souter & Sons | 1986



- LUXURY YACHT D'ANGLETERRE II -

135 feet / 41.2 meters | W.A. Souter & Sons | 1986



- LUXURY YACHT D'ANGLETERRE II -

135 feet / 41.2 meters | W.A. Souter & Sons | 1986



- LUXURY YACHT D'ANGLETERRE II -

135 feet / 41.2 meters | W.A. Souter & Sons | 1986



- LUXURY YACHT D'ANGLETERRE II -

135 feet / 41.2 meters | W.A. Souter & Sons | 1986



- LUXURY YACHT D'ANGLETERRE II -

135 feet / 41.2 meters | W.A. Souter & Sons | 1986



- LUXURY YACHT D'ANGLETERRE II -

135 feet / 41.2 meters | W.A. Souter & Sons | 1986



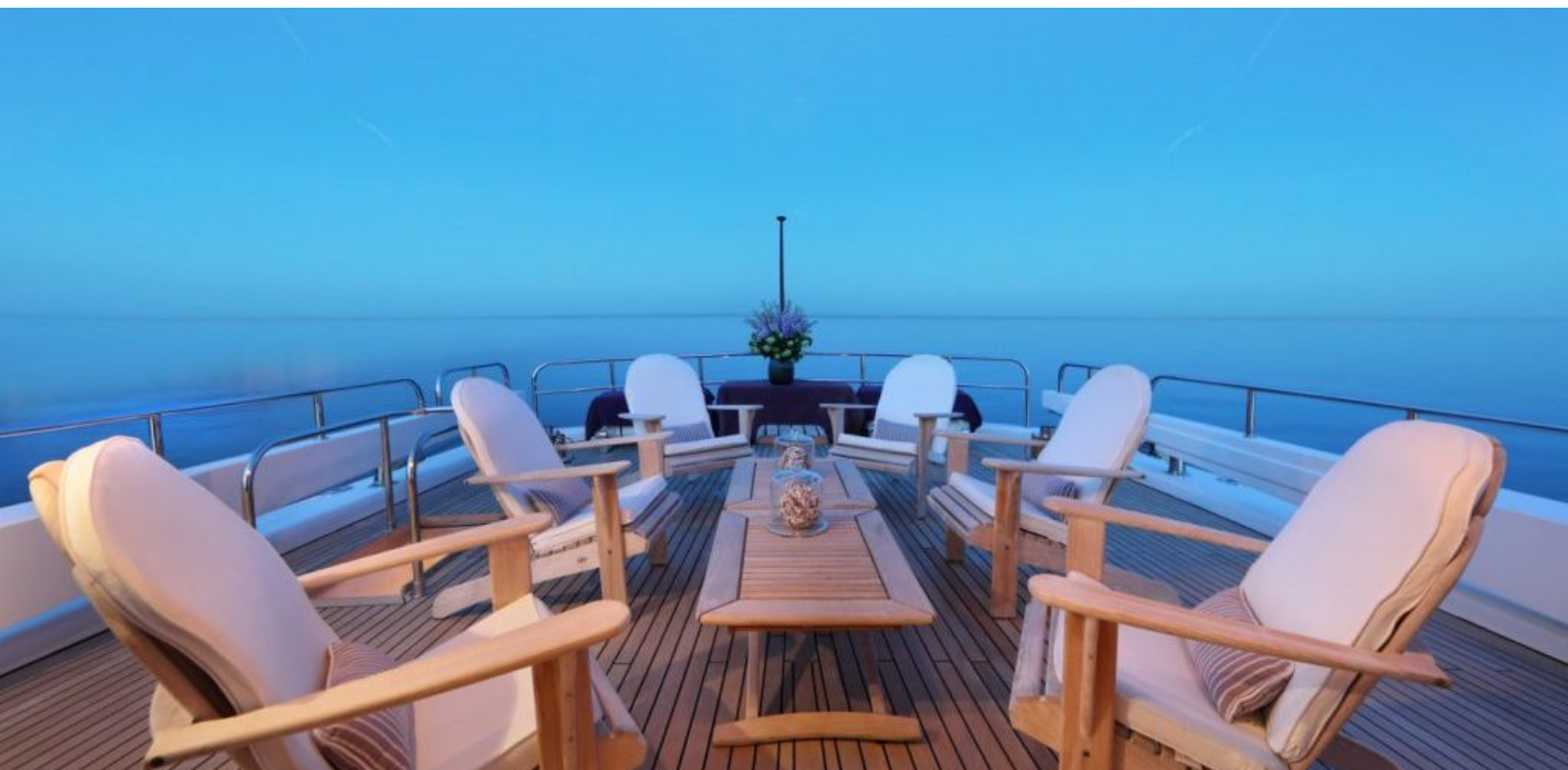
- LUXURY YACHT D'ANGLETERRE II -

135 feet / 41.2 meters | W.A. Souter & Sons | 1986



- LUXURY YACHT D'ANGLETERRE II -

135 feet / 41.2 meters | W.A. Souter & Sons | 1986



- LUXURY YACHT D'ANGLETERRE II -

135 feet / 41.2 meters | W.A. Souter & Sons | 1986



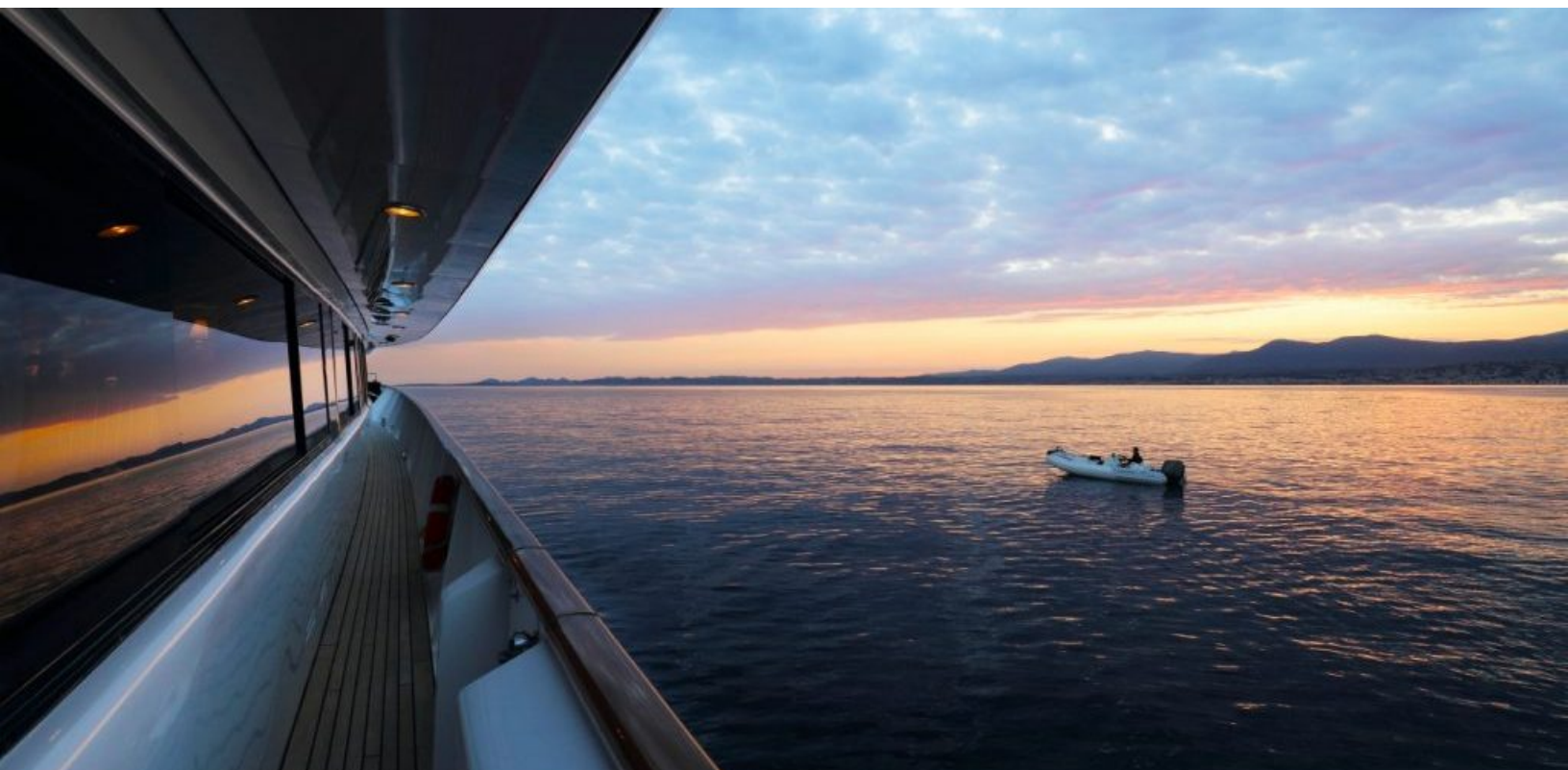
- LUXURY YACHT D'ANGLETERRE II -

135 feet / 41.2 meters | W.A. Souter & Sons | 1986



- LUXURY YACHT D'ANGLETERRE II -

135 feet / 41.2 meters | W.A. Souter & Sons | 1986

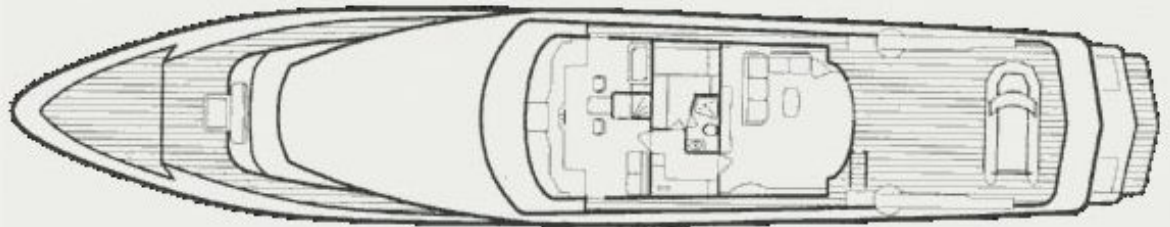


- LUXURY YACHT D'ANGLETERRE II -

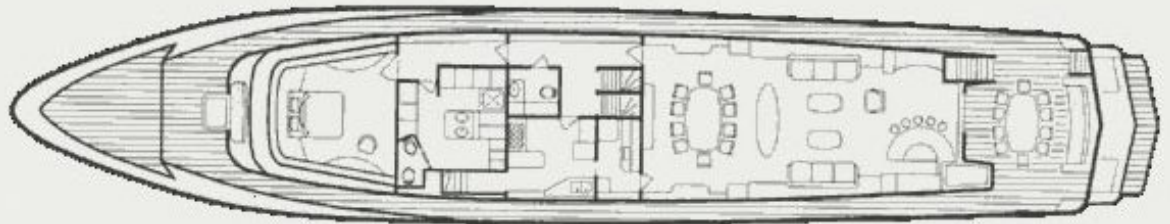
135 feet / 41.2 meters | W.A. Souter & Sons | 1986



UPPER DECK



MAIN DECK



LOWER DECK

