

- LUXURY YACHT MENORCA -

159.1 feet / 48.5 meters | Botje Ensing & Co. | 1961



14 GUESTS



7 STATEROOMS



11 CREW



14 KNOTS

ABOUT MENORCA

The MENORCA yacht brochure reveals a vessel of distinction, where careful thought was placed into every detail on board. With an LOA of 159.1ft / 48.5m, the interior design is by Mare E Terra Studio, with exterior styling by Botje Ensing & Co.. The MENORCA yacht accommodates 14 guests in 7 staterooms, which are each appointed with the best in comfort and entertainment. Explore this top of the line yacht, built by luxury yacht builder Botje Ensing & Co., where meticulous work and creativity come together to create a floating sanctuary. Located in: Southern Spain, MENORCA beckons all who seek the best in luxury travel.

ASKING PRICE

For Info Please Inquire*

CHARTER RATE

For Info Please Inquire

SPECIFICATIONS

Builder	Botje Ensing & Co.
Built / Refits	1961
Length	159.1 ft / 48.5 m
Beam	28.9 ft / 8.8 m
Draft	11.2 ft / 3.4 m
Gross Tonnage	395
Naval Architect	Botje Ensing
Exterior Stylist	Botje Ensing & Co.
Interior Stylist	Mare E Terra Studio
Hull	Steel
Classification	RINA, Hellas LTD
Flag	Malta

- LUXURY YACHT MENORCA -

159.1 feet / 48.5 meters | Botje Ensing & Co. | 1961



- LUXURY YACHT MENORCA -

159.1 feet / 48.5 meters | Botje Ensing & Co. | 1961



- LUXURY YACHT MENORCA -

159.1 feet / 48.5 meters | Botje Ensing & Co. | 1961



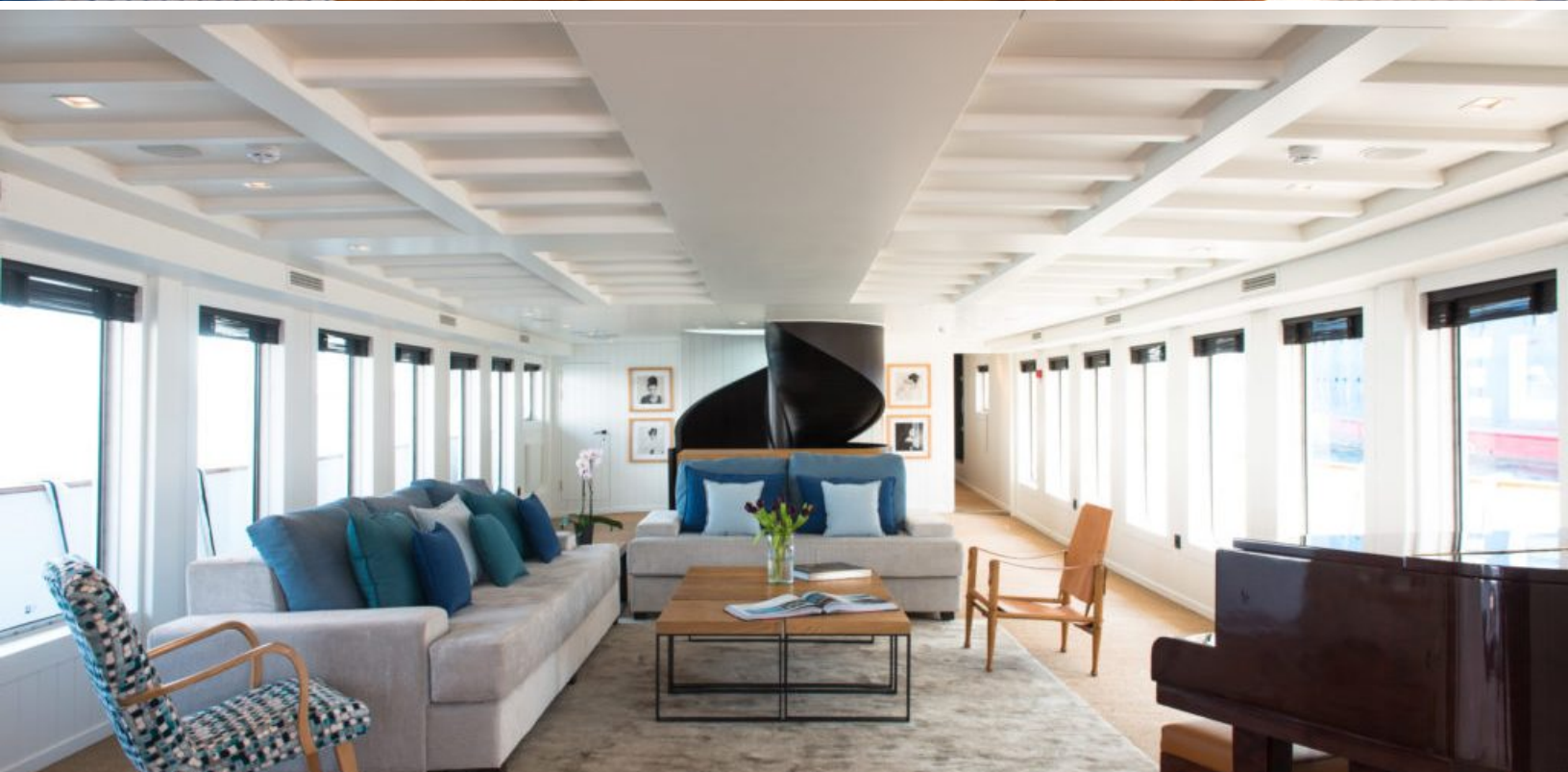
- LUXURY YACHT MENORCA -

159.1 feet / 48.5 meters | Botje Ensing & Co. | 1961



- LUXURY YACHT MENORCA -

159.1 feet / 48.5 meters | Botje Ensing & Co. | 1961



- LUXURY YACHT MENORCA -

159.1 feet / 48.5 meters | Botje Ensing & Co. | 1961



- LUXURY YACHT MENORCA -

159.1 feet / 48.5 meters | Botje Ensing & Co. | 1961



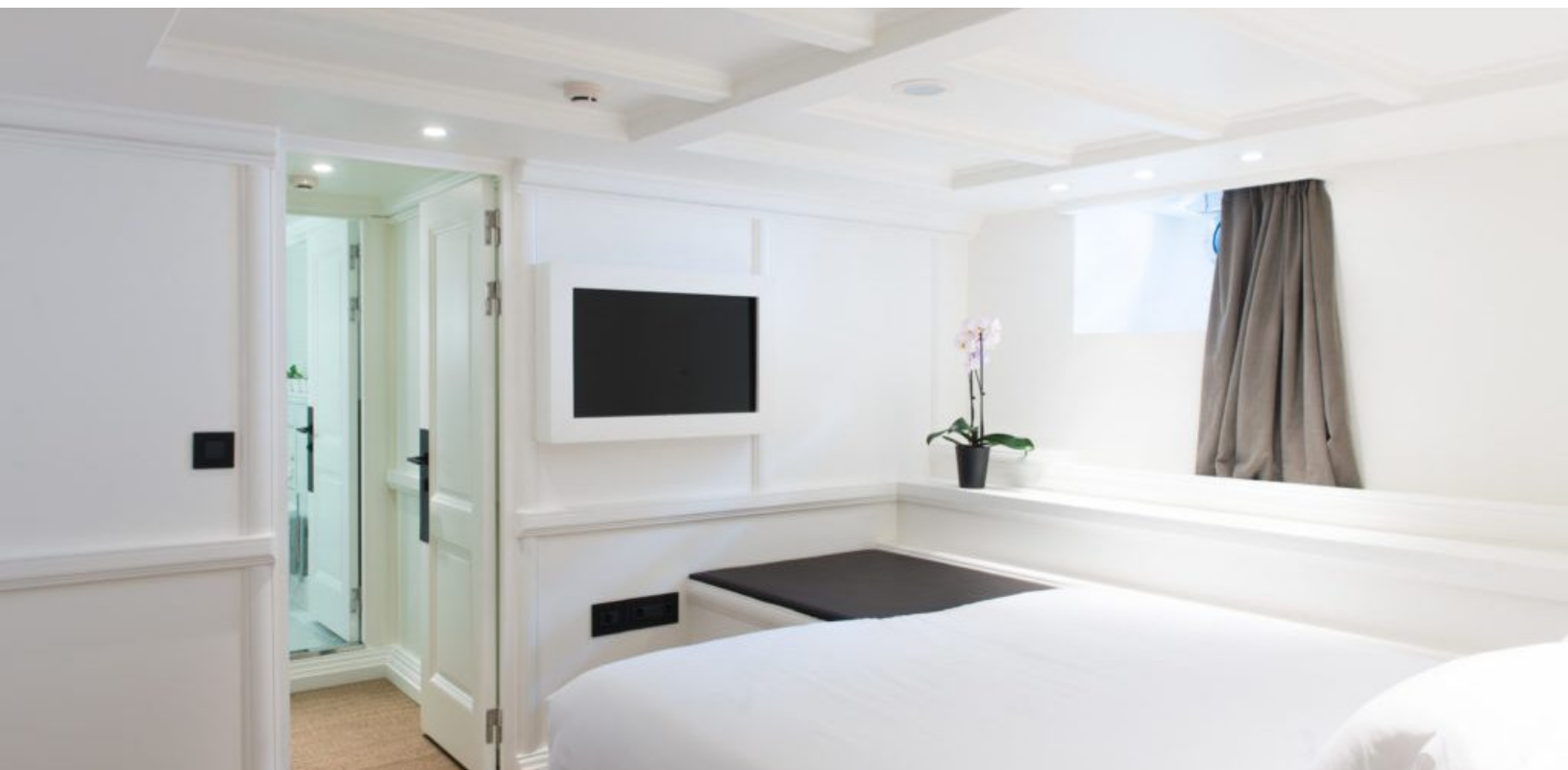
- LUXURY YACHT MENORCA -

159.1 feet / 48.5 meters | Botje Ensing & Co. | 1961



- LUXURY YACHT MENORCA -

159.1 feet / 48.5 meters | Botje Ensing & Co. | 1961



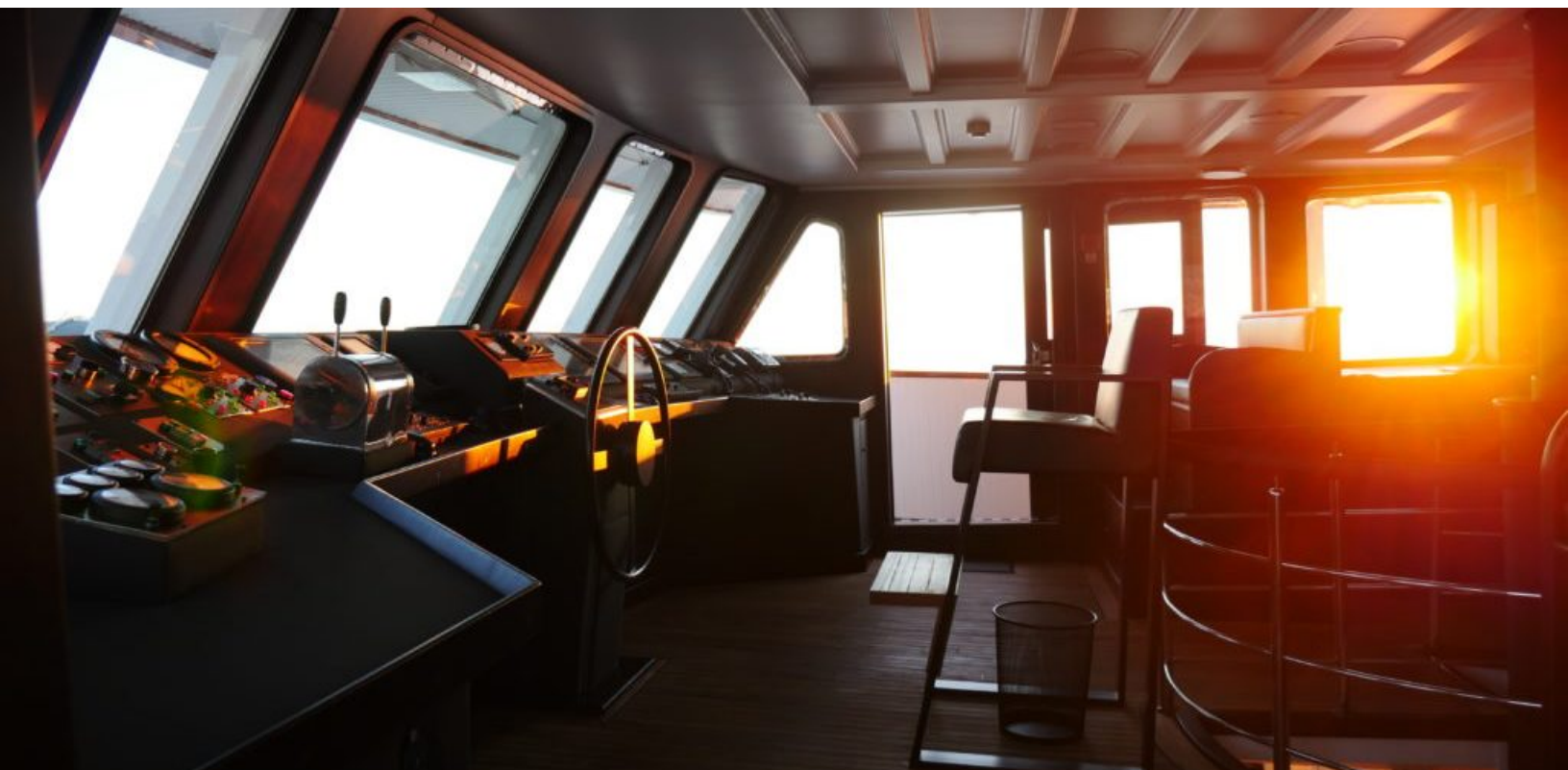
- LUXURY YACHT MENORCA -

159.1 feet / 48.5 meters | Botje Ensing & Co. | 1961



- LUXURY YACHT MENORCA -

159.1 feet / 48.5 meters | Botje Ensing & Co. | 1961



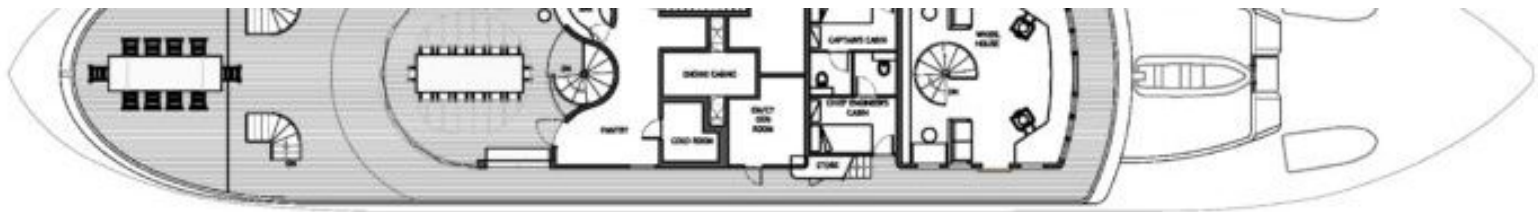
- LUXURY YACHT MENORCA -

159.1 feet / 48.5 meters | Botje Ensing & Co. | 1961

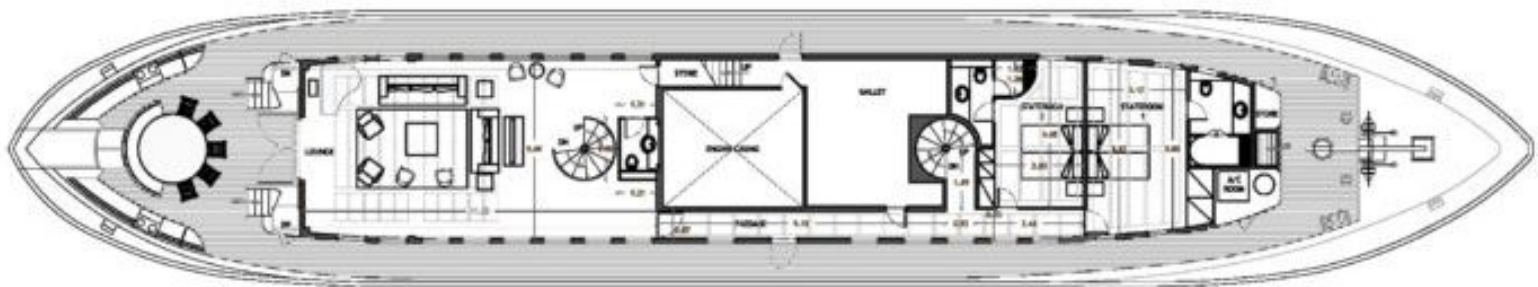


- LUXURY YACHT MENORCA -

159.1 feet / 48.5 meters | Botje Ensing & Co. | 1961



BRIDGE DECK
scale 1/200



MAIN DECK

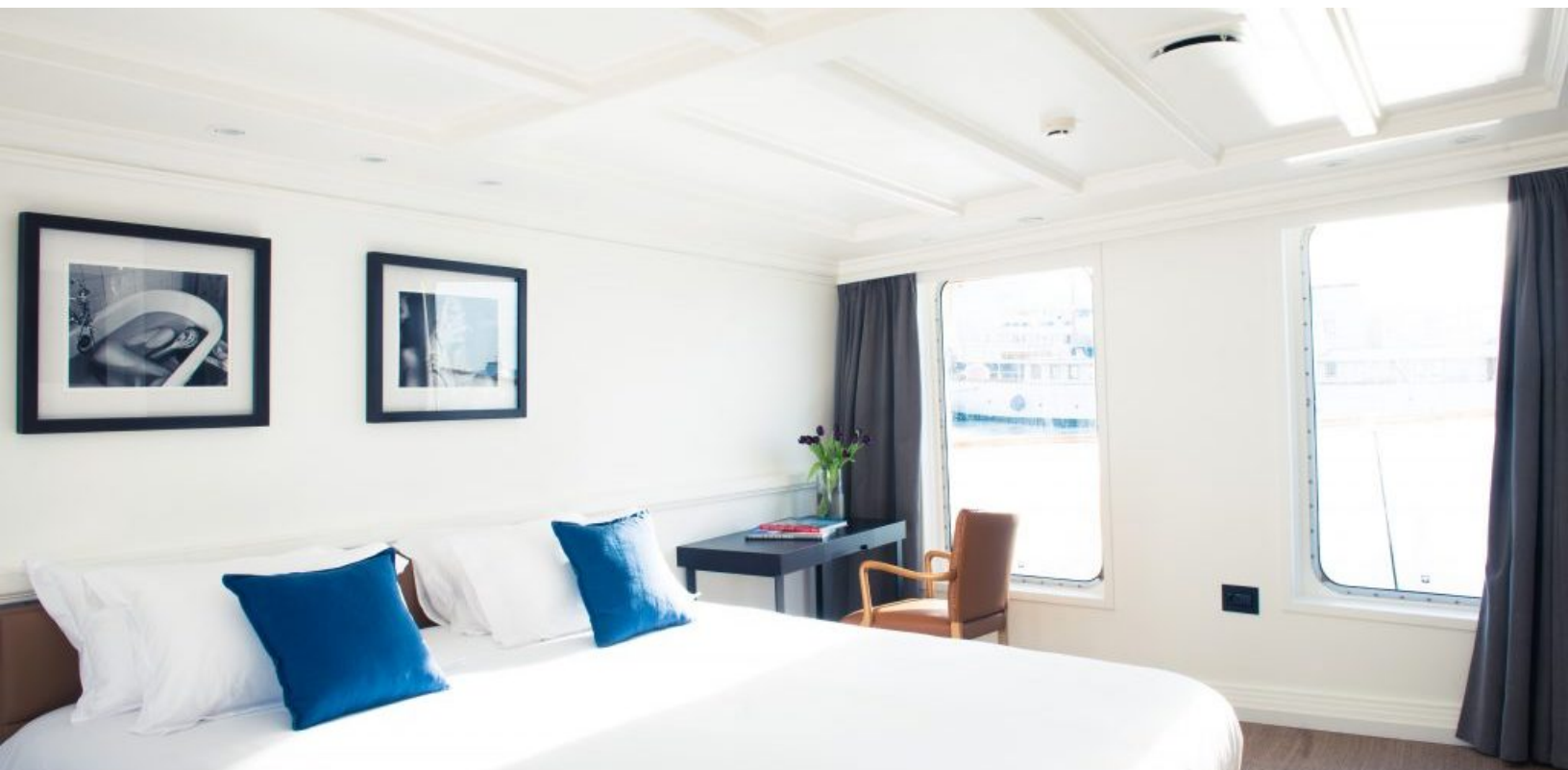
- LUXURY YACHT MENORCA -

159.1 feet / 48.5 meters | Botje Ensing & Co. | 1961



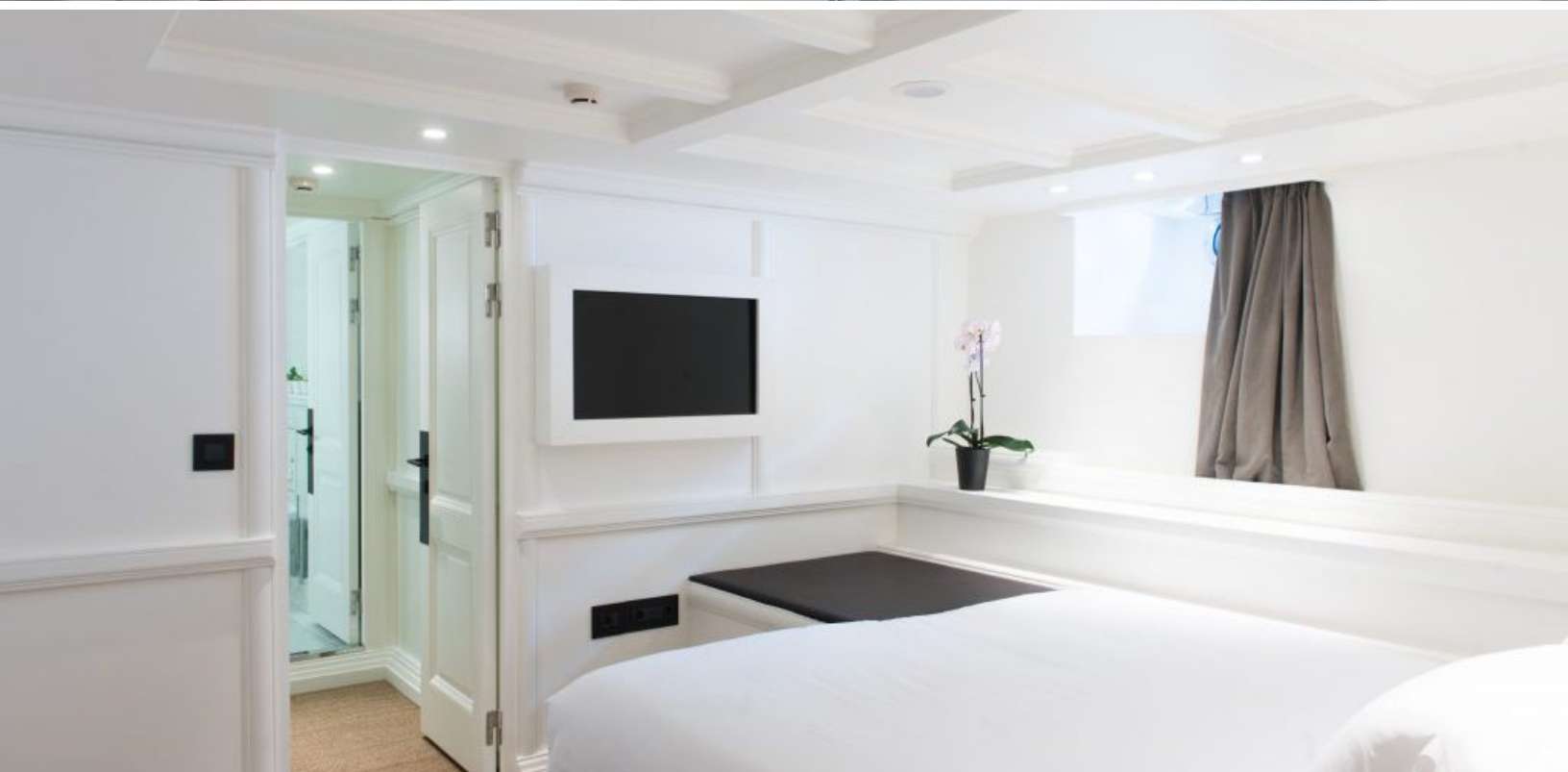
- LUXURY YACHT MENORCA -

159.1 feet / 48.5 meters | Botje Ensing & Co. | 1961



- LUXURY YACHT MENORCA -

159.1 feet / 48.5 meters | Botje Ensing & Co. | 1961



- LUXURY YACHT MENORCA -

159.1 feet / 48.5 meters | Botje Ensing & Co. | 1961



- LUXURY YACHT MENORCA -

159.1 feet / 48.5 meters | Botje Ensing & Co. | 1961



- LUXURY YACHT MENORCA -

159.1 feet / 48.5 meters | Botje Ensing & Co. | 1961



- LUXURY YACHT MENORCA -

159.1 feet / 48.5 meters | Botje Ensing & Co. | 1961



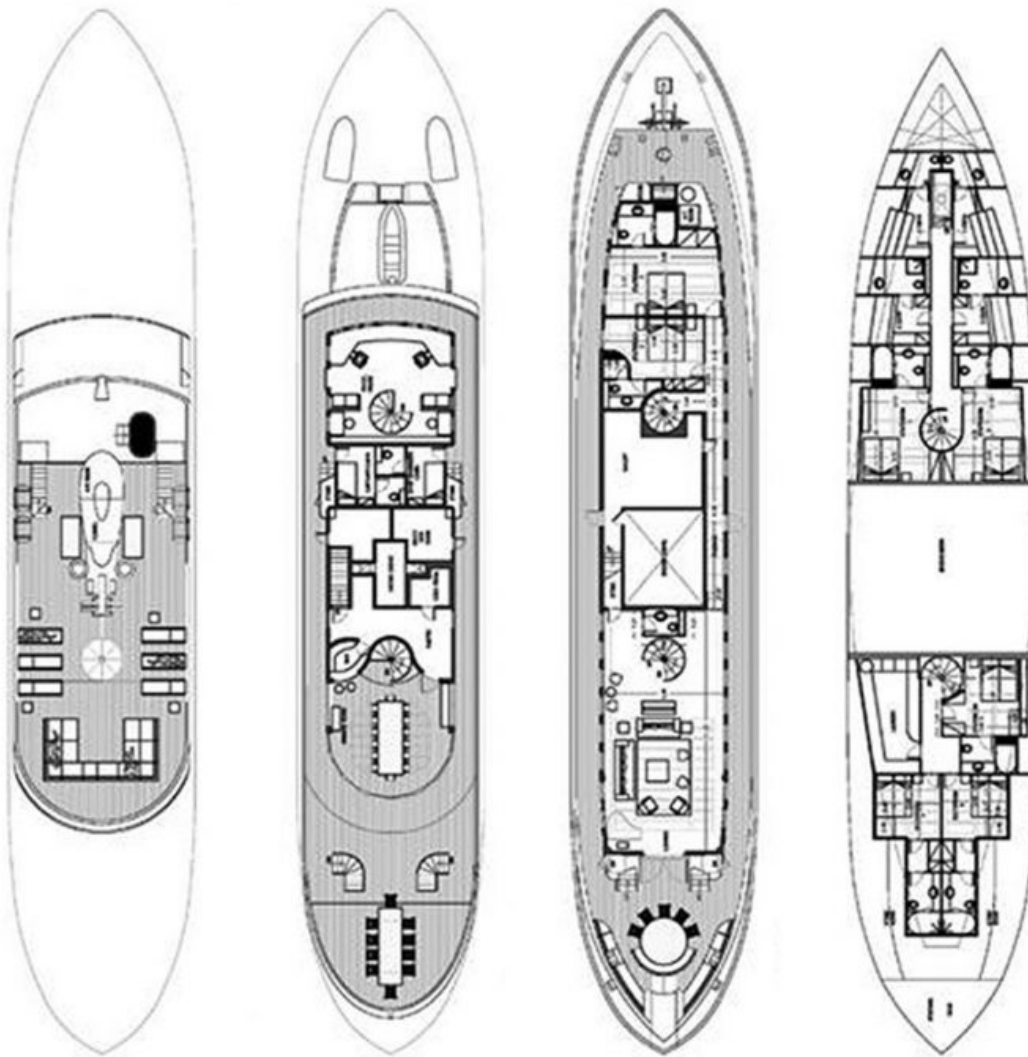
- LUXURY YACHT MENORCA -

159.1 feet / 48.5 meters | Botje Ensing & Co. | 1961



- LUXURY YACHT MENORCA -

159.1 feet / 48.5 meters | Botje Ensing & Co. | 1961



MENORCA, 159' (48.51m) Botje Ensing & Co. Motoryacht, 1961/2004