



*Luxury and Elegance*

*M/Y NEWS*



W

elcome aboard the Motor Yacht NEWS. One's first impression is of the classic swept lines, fine wood joinery and full walk around deck giving easy access to all of her levels.

presentations with its concealed projection system. The room exudes a european flavor with warm burled woods, objets d'art, ornate mirror and overhead light box. The table is heavy clear glass and seems to float on twin pedestals.

Entering the large main salon, the span of tinted glass walls allows an unobstructed view of the panorama. The versatility of the salon itself is evident from the comfortable layout of the seating area with grand piano, state of the art entertainment center and wet bar, informal eating area, guest head and the fully enclosed aft deck lounge.

The gourmet kitchen is outfitted in corian and stainless with dual Sub-Zero freezers and refrigerators, and an assortment of high end appliances and equipment to satisfy the most sophisticated chef. No expense was spared in the design of this galley which is equally prepared for a large formal dinner or light midnight snack.

Following the spiral stairway below, one comes upon a dazzling octagonal



Amidship is the enclosed pilothouse featuring all new electronics,

# M/y NEWS

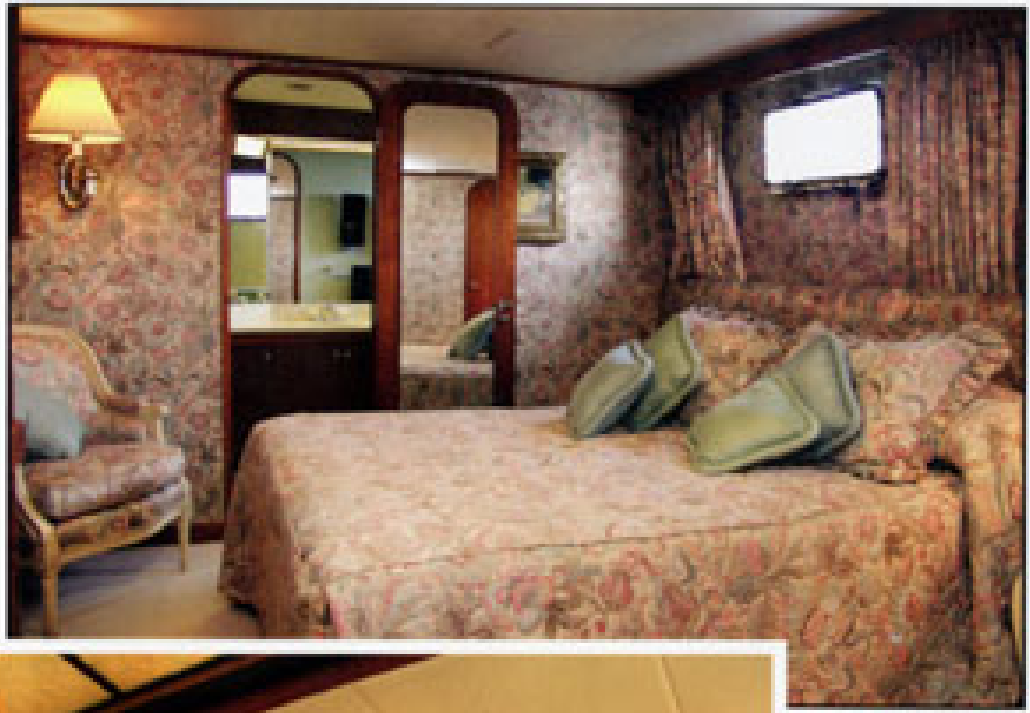
foyer leading to the guest accommodations, which are all aft for privacy. She features twin en suite baths in the luxurious master stateroom, and two spacious guest staterooms with en suite baths. The crew's quarters, lounge, laundry and galley are forward and completely seperate from the guest areas.

consoles, steering and engine controls. Above, on the upper deck is the covered sky lounge and fly bridge with duplicate instrumentation.

One may sunbathe on the foredeck, or sportsfish from the fighting chair on the aft deck by day, which converts to an open air wet bar with a gas fired grill for evening entertainment and dancing. NEWS is perfect for business or pleasure!

Forward of the main salon is the full beam formal dining salon which is equally suitable for business





Design by  
VirtualLux.com



Photos by Island

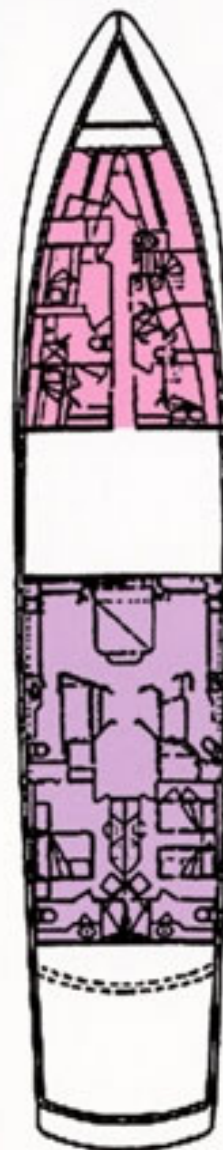


**R**arely does one find a yacht this impressive. The grace of her lines, the effortless flow of her decks, the quality of the many luxurious amenities, and the painstaking attention to detailed craftsmanship combine in one stunningly beautiful vessel. She will please and surprise even the most seasoned of yachtsmen. ❖

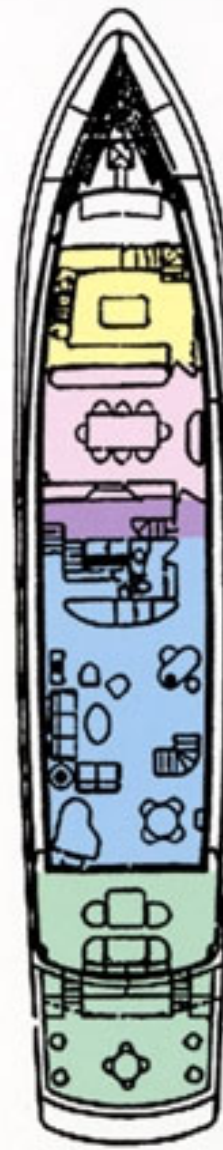


### Specifications

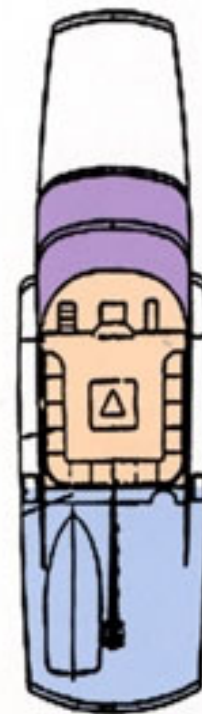
Type:	Aft cockpit motor yacht	Range:	1100 nm
Builder:	Denison / Derektor	Hull:	Aluminum
Model:	Custom	Deck:	Teak
Year:	1986	Engines:	Twin 1530 hp turbo diesel MTU
LOA:	121' (36.9M)	Guests:	3 staterooms, 6 guests
Beam:	25' (7.6M)	Crew:	3 cabins, 5 berths
Draft:	7' (2.1M)	Major Refit:	2000 - 2001
Fuel:	12500 gallons		
Water:	1700 gallons		



Lower



Main



Upper

### Color Key

#### Lower

	Crew's Cabin
	Staterooms

#### Main

	Galley
	Dining Salon
	Main Salon
	Aft Deck

#### Upper

	Bridge
	Fly Bridge
	Boat Deck